



ISO 9001:2022

ISO 14001:2022

ISO 45001:2022





# Who we are?





## **Offshore & Marine Services (OMS)**

We provide wide-range of services within the marine industry such as project management, engineering & design and maintenance programs. All services are uniquely tailored to suit each individual client, ranging from ships owners and shipyards to insurance companies and governments. Our team consists of approximately 50 employees.





# What we do?

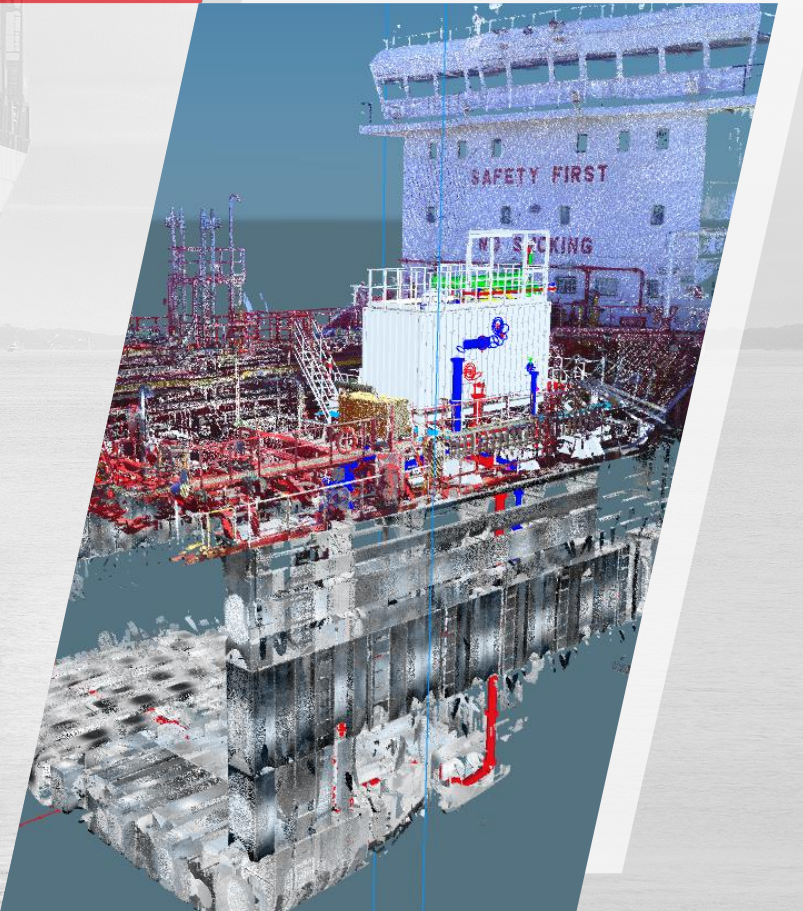




## **DESIGN AND ENGINEERING**

### **Modern Tools and Techniques**

Together with our strategic partners we offer high value and effective engineering services optimized for each specific need. High quality project engineering ensures consistent and reliable installation services for our ship and offshore projects. We provide high-end project management, engineering, commissioning and quality assurance on multi-discipline projects.







## **INSTALLATION AND PRODUCTS** **Meeting Customers' Requirements**

We specialize in installing a wide range of products for Marine and Oil & Gas Industries. Our services include installation and sales of Ballast Water Treatment Systems, Water Makers, Automation Systems, Marine Electrical Components and Systems, prefabricated piping and steel constructions certified to the highest standards.





## DEVELOPMENT OF ENERGY EFFICIENCY SOLUTIONS:

- shaft generator efficiency optimization,
- batter and hydrogen hybrid systems,
- PAC, PLC HMI and SCADA programming,
- ship's Energy efficiency optimization (motors FC, LED retrofit),
- electrical installation and switchboards overhaul,
- electrical insulation and protections tests,
- breakers test and retrofits
- switchboards and automation cabinets production





## **DIGITALIZATION AND SCANNING**

### **Optimizing your operations**

Offshore & Marine Services offer effective digitalization of paper-based documentation as well as 3D scanning and electronic measurement for newbuild projects and ships in operation. Our digital services are also an integral part of our effective turn-key projects, ensuring exact prefabrication and effective installation.





# Reference Projects

## Kongsberg Automation systems

- HMS Trossø –K-Chief 600, AutoChief
- Jaeger Arrow –K-Chief 600
- Sten Hydra and Sten Aurora–K-Chief 600
- MYS SLEPIKOVSKOGO –K-Chief 600
- MYS Sheltinga –K-Chief 600
- Pearl Seaways –K-Chief 600
- Elenora – Generator Switchboard MCC Starters
- Shore Power Installation :  
Stena Baltica, Livia, Scandia and Flavia are in progress



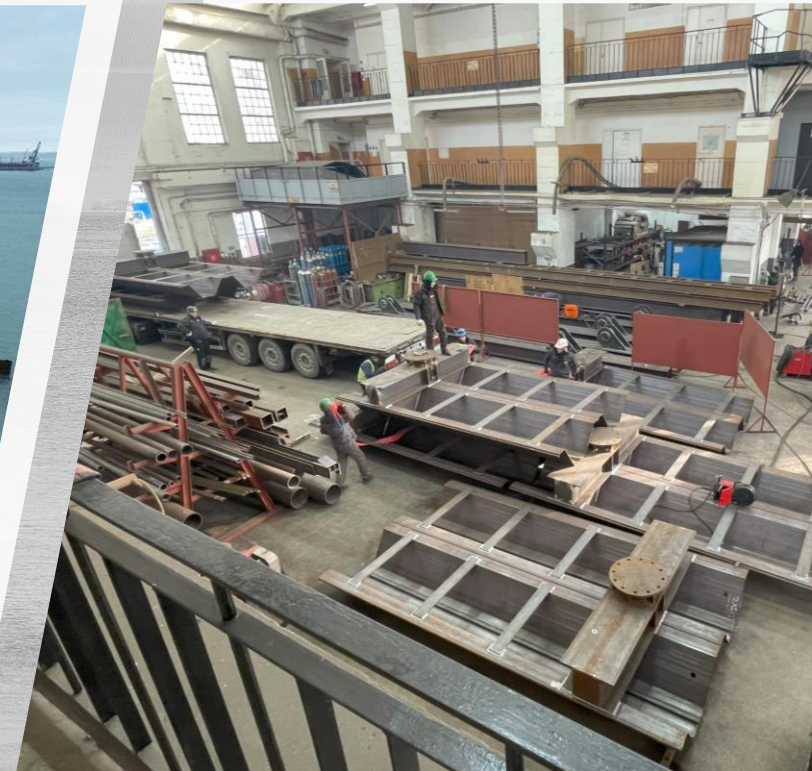
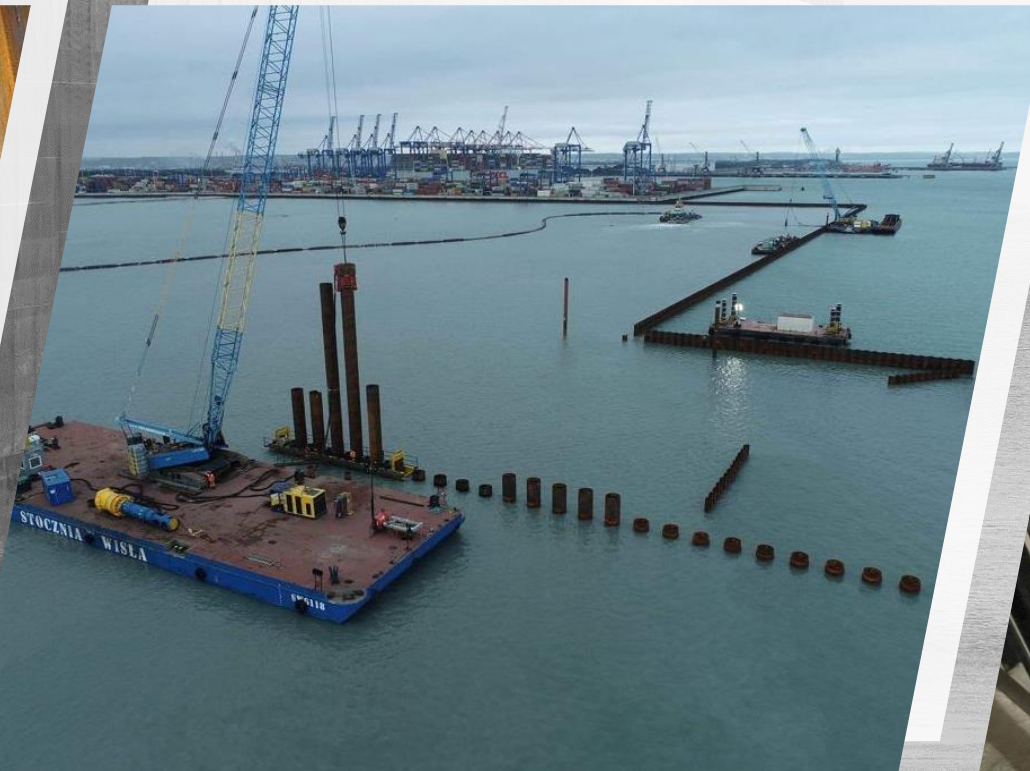


# Reference Projects

Extension of the DCT container terminal, prefabrication of flap anchors, clamps connecting Larsen profiles, assembly of steel structures in the water.

The first hydrotechnical structure of this type in Europe.

Our scope included prefabrication of 400 tons of steel.





# Reference Projects

## **BWTS**

30+ Vessels, including 3 deckhouses for Christiania Shipping and Offshore project for OSM during ships operation.

**Class Renewal 10 year w/BWTS**  
Hagland Captain & Hagland Boss







Thank you!